

Pipeline Integrity

Pipelines are integral and essential infrastructure for the safe and efficient transport of oil and gas. Maintenance solutions employed to extend the longevity and safety of the pipeline network are vital in protecting the public and the environment.

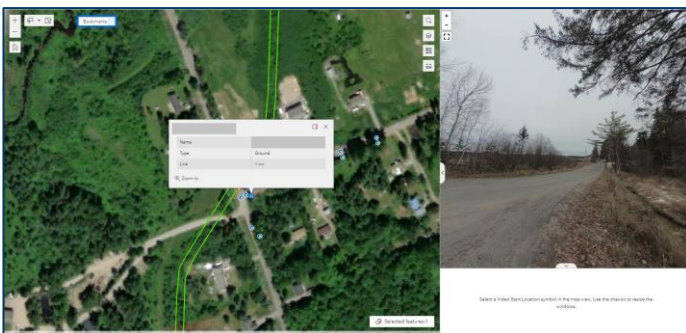
Our pipeline integrity surveying professionals work with operators to identify current and potential repairs, supporting system upgrades and ongoing maintenance within your pipeline right-of-ways and facilities. With expertise in precise measurement, geographic positioning and advanced geospatial technologies, we provide a complete range of services to meet the needs of our clients' pipeline integrity management programs.

Our Professional Services

- Dig site surveys
- Access mapping
- Right-of-way staking
- GIS display and data archiving
- Line locates and sweeps
- As-built surveys
- Tool and survey data correlation
- Pipe replacement surveys
- Launchers and receivers surveys
- Valve replacement surveys
- Facility surveys
- Pipeline profiles and depth of cover surveys
- Above-ground marker (AGM) surveys
- Slope stability monitoring surveys
- Mapping services
- 3D laser scanning
- Aerial and UAV surveys
- Ground penetrating radar (GPR)
- Water crossing surveys
- Cathodic protection surveys
- Mobile mapping

Custom Portals / *Checking condition anywhere, anytime.*

While traditional surveying has its place, our forward-thinking solutions unlock the full value of digital asset management.



The value:

- Improved asset management
- Greater efficiency
- Risk mitigation
-

What you get:

- Custom digital asset portals
- Interactive maps with tabular asset data
- High-resolution imagery, panoramic site views, and UAV-captured video
- A single, easy-to-navigate source of truth for your assets

For more information, visit our website or get in touch with your local office at geoverra.com/contact