

Mobile Mapping System

For large infrastructure projects, conventional surveying can be tedious. Boots on the ground can pose a serious challenge for crews to acquire precise measurements efficiently and safely—taking a lot of time, interrupting day-to-day traffic, and calling for large crews to get the job done. While there's a time and a place for traditional surveying, GeoVerra embraces technology, like mobile mapping, to advance the industry.

A Mobile Mapping System (MMS) is an advanced laser affixed to a moving vehicle that scans its surroundings 360 degrees (LiDAR Technology). This technology measures objects by millions of points per second with centimetre absolute accuracy, quickly collecting every visual component in diverse environments including highways, power lines, urban streets, railways, and pipeline routes. Clients can easily access this new class of data digitally for a total immersive and accurate 3D view of objects and surroundings for their project.

Benefits

- High-precision data capture
- Quicker data collection and increased efficiencies
- Fewer people in the field, mitigating safety risks
- Reduced interruptions to stakeholders and surrounding communities
- Integration with custom portals, simplifying asset management and data access

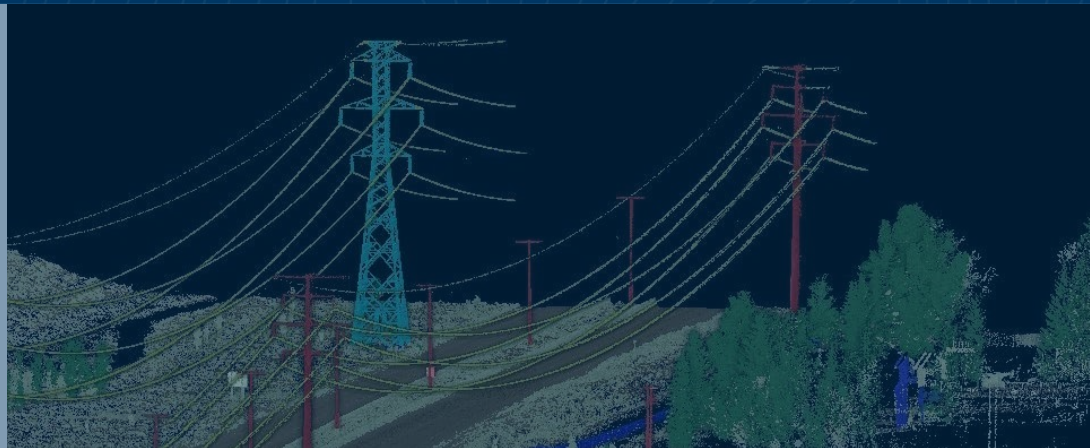
Solutions for:

- Asset management
- GIS inventory and maintenance
- Digital imaging logs
- Small, but complex areas
- Preliminary site survey
- As-built surveys
- Large projects and corridors
- Large-scale Fiber to the Home initiatives
- Geo-referenced immersive imagery and mapping data

Sectors

- Engineering
- Construction
- Transportation
- Infrastructure
- Energy
- Utilities
- Land use planning
- Mining





Trimble® MX50 Mobile Mapping System

The Trimble MX50 is a complete mobile mapping solution that combines leading edge hardware with intuitive field software and a powerful, integrated office software workflow. It combines long range LiDAR, spherical imagery and oblique cameras along with best-in-class inertial sensors providing the ultimate in mobile mapping performance. The Trimble MX50 rapidly captures laser scans and images, both panoramic and multi-angle, as you drive.

This high-performance mobile mapping system produces a very dense point cloud and can measure ranges up to 80 meters in typical working conditions. The Trimble MX50 is ideal for undertaking data capture for large survey, engineering projects and asset management.

Dense point cloud, high accuracy, long range for surveying, engineering, asset management and mapping.

- Mobile Mapping System combining precise LiDAR data and immersive panoramic imagery
- State-of-the-art Trimble LiDAR technology integrated within a proven and reliable mobile platform
- Accurate point cloud for applications such as road surfaces, highway maintenance, or asset management

For more information, visit our website or get in touch with your local office at geoverra.com/contact